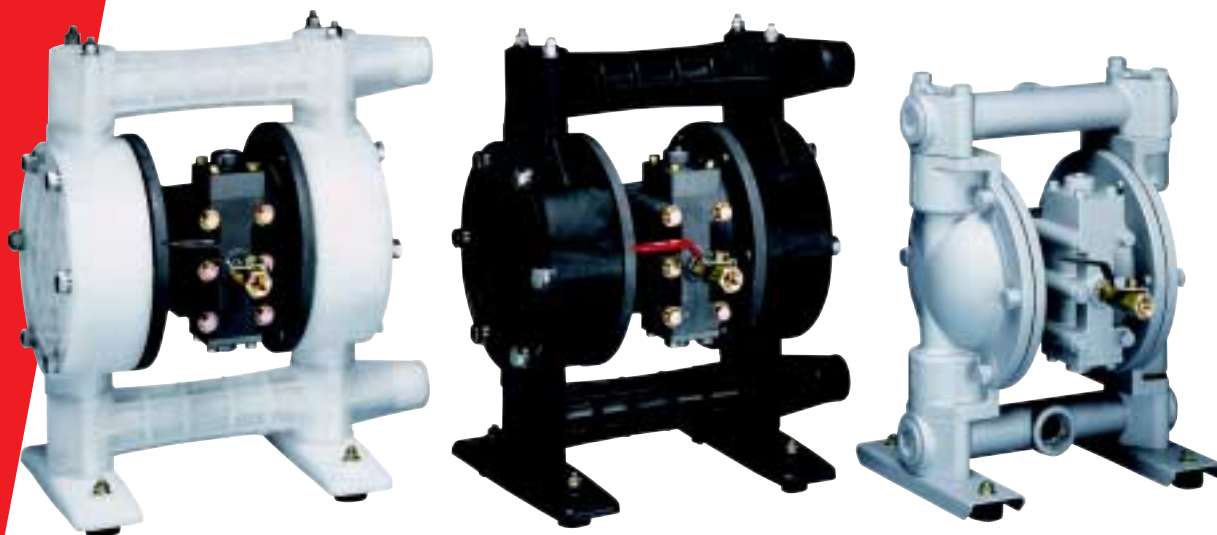


TopAir – TA-25

Persluchtgedreven Membraanpompen



Pompgegevens

Voorbeeld: TA-25 BPC

TA = TopAir
 25 = In- en uitgang, nominaal
 B = Kogelklep
 P = Materiaal natte delen
 C = Materiaal membranen

Technische gegevens

Max. debiet

160 l/min

Aansluitingen

Vloeistof in- uitlaat: 1" BSP (12 mm)

(for Alu/SS: 1" BSPT)

Luchtinlaat: 3/8" BSPT (met kogelklep)

Luchtuitlaat: Rc 3/4" (met muffler)

Slagvolume

Rubber membranen: 0,6 liter

PTFE membranen: 0,5 liter

Maximale persluchtdruk

TA-25 BP_, BV_, BTT, BXT: 0.2 - 0.5 MPa

TA-25 BA_, BF_, BS_: 0.2 - 0.7 MPa

Persluchtdruk

TA-25 BP_, BV_, BTT, BXT: 0.5 MPa

TA-25 BA_, BF_, BS_: 0.7 MPa

Max. deeltjesgrootte

Kleiner dan 3 mm

Gewicht

TA-25 BP_: 12.4 kg

TA-25 BA_: 13.0 kg

TA-25 BF_: 20.0 kg

TA-25 BS_: 25.0 kg

TA-25 BV_: 12.7 kg

TA-25 BTT: 24.0 kg

TA-25 BXT: 17.3 kg

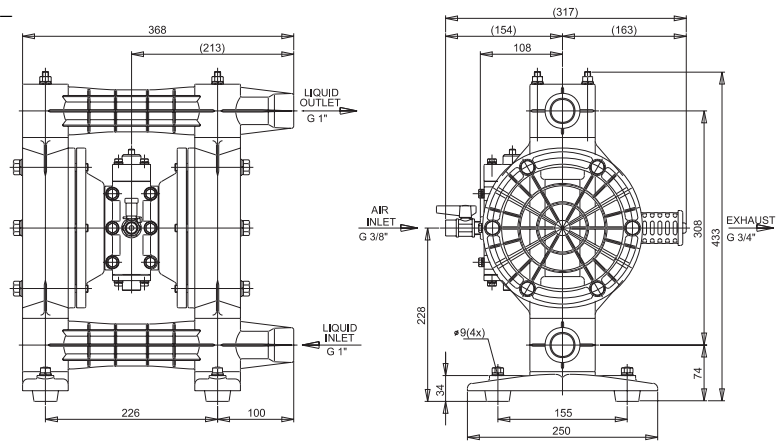
Materialen

| Membranen | Natte delen | | | | | | |
|-----------------------------|--------------|--------------|------------------|--------------------|-----------|-----------|-----------|
| | A: Aluminium | F: Cast iron | P: Polypropylene | S: Stainless steel | T: PTFE | V: PVDF | X: PVC |
| C: Neoprene® (CR) | TA-25 BAC | TA-25 BFC | TA-25 BPC | TA-25 BSC | - | - | - |
| N: Nitrile (NBR) | TA-25 BAN | TA-25 BFN | TA-25 BPN | TA-25 BSN | - | - | - |
| E: Nordel® (EPDM) | TA-25 BAE | TA-25 BFE | TA-25 BPE | TA-25 BSE | - | - | - |
| S: Santoprene® (TPO) | TA-25 BAS | TA-25 BFS | TA-25 BPS | TA-25 BSS | - | - | - |
| H: Hytrel® (TPEE) | TA-25 BAH | TA-25 BFH | TA-25 BPH | TA-25 BSH | - | TA-25 BVH | - |
| V: Viton® (FPM) | TA-25 BAV | TA-25 BFV | TA-25 BPV | TA-25 BSV | - | - | - |
| T: Teflon® (PTFE) | TA-25 BAT | TA-25 BFT | TA-25 BPT | TA-25 BST | TA-25 BTT | TA-25 BVT | TA-25 BXT |

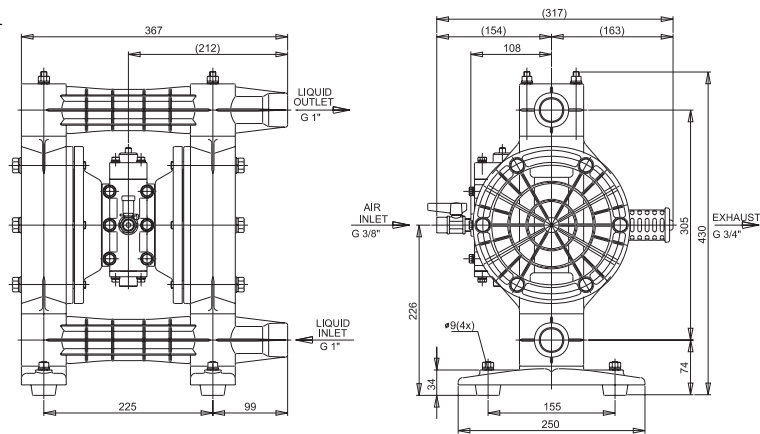
Nota: Kogelmateriaal voor Hytrel® membranen = Nitrile (NBR), voor Santopreen® pompen = Nordel® (EPDM).

Afmetingen

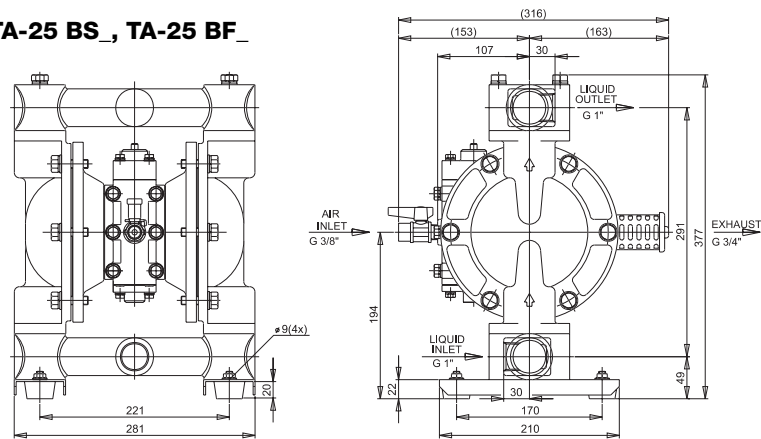
TA-25 BP_



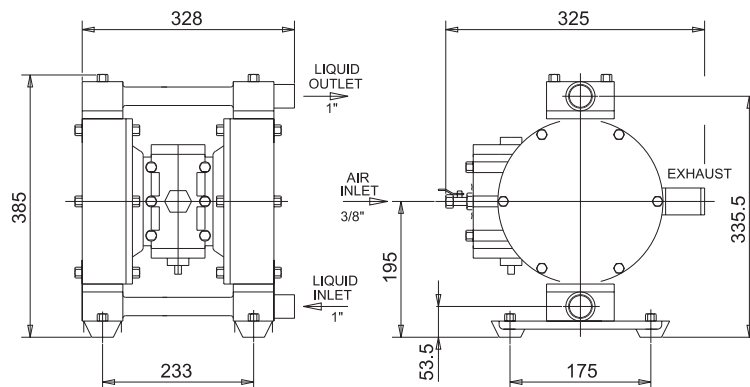
TA-25 BV_



TA-25 BA_, TA-25 BS_, TA-25 BF_

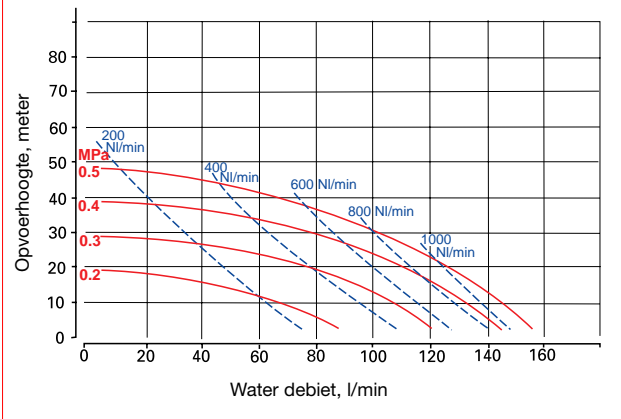


**TA-25 BTT,
TA-25 BXT**

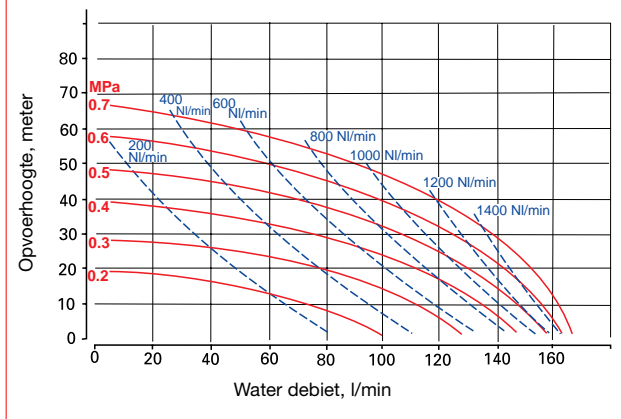


Performance curves (gebaseerd op water bij 20°C)

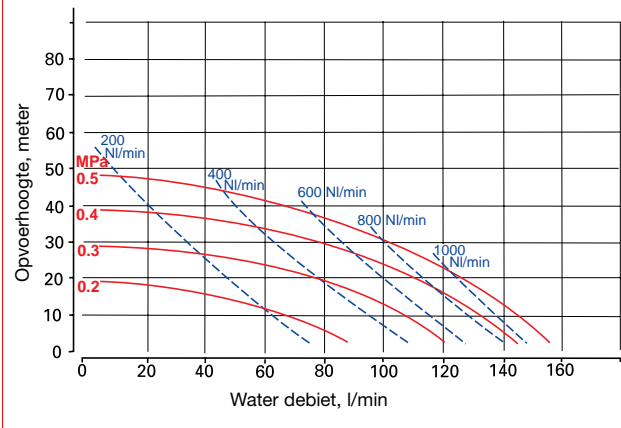
TA-25 BP_, TA-25 BV_



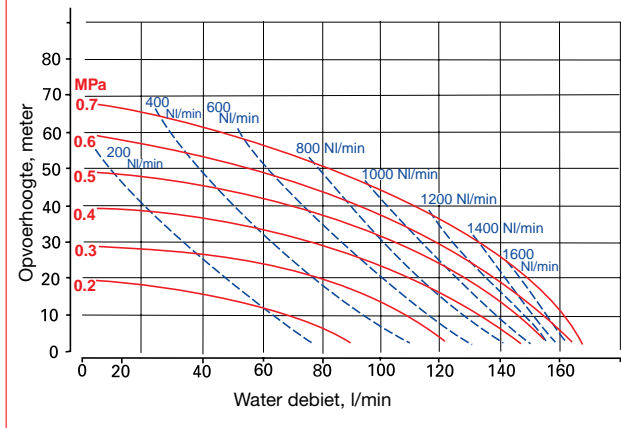
TA-25 BA_, TA-25 BS_, TA-25 BF_



TA-25 BPT_, TA-25 BVT_, TA-25 BTT, TA-25 BXT



TA-25 BAT_, TA-25 BST_, TA-25 BFT



Om de beste levensduur voor membranen te garanderen, kies een pomp die 1,5 maal de gevraagde capaciteit aankan.

Opgepast: Persluchtdruk moet lager blijven dan 0.5 MPa voor PP, PTFE en PVDF pompen.



JOHNSON PUMP
Johnson Pump Belgium N.V.

